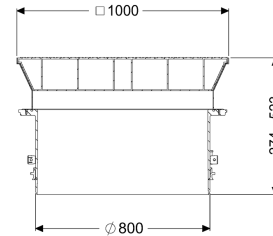
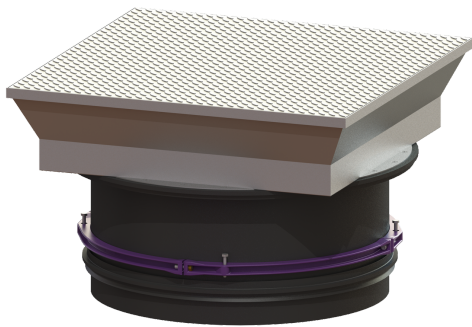


Upper section with cover plate LW 800, Class B



Article information

Item no.: 8740179
 GTIN: 4026092070451
 Price group: 60

Description

Upper section for continuous height and level compensation for chamber module LW 1000, consisting of a flush-to-ground cover for setting in concrete, with inner joints, all-round frost- and weather-proof seal, gas spring as an opening aid incl. self-effective arresting device. Suitable for taper with 800 mm access.

General characteristics

Colour: black
 Material: Polymer

Dimensions

Net weight: 132,37 kg
 Gross weight: 150,1 kg
 Clear width (LW): 800 mm
 Adjustment range: 274 - 523
 Packaging dimension: length
 Packaging dimension: width
 Packaging dimension: height

Coverage features

Type: surface water resistant
 Surface: Stainless steel
 Locking: screwed
 Load class: B 125 (EN 124)