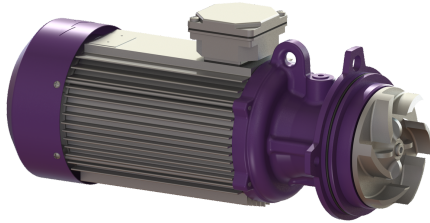


Geared motor for SPF 300 KE, IP 55



Article information

Item no.: 680916
GTIN: 4026092092316
Price group: 90

Description

Geared motor suitable for pump SPF 300 KE

General characteristics

Type de protection moteur:	IP 55
ATEX:	no

Dimensions

Net weight:	25,5 kg
Gross weight:	26,5 kg
Packaging dimension:	length
Packaging dimension:	width
Packaging dimension:	height

Pumping device

Power P2:	3 kW
-----------	------

Control

Mains frequency:	50 Hz
Operating voltage:	400 V