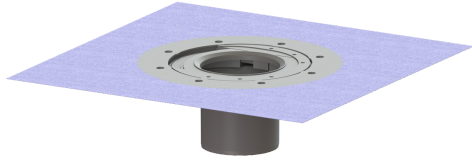


Intermediate section with system 100 glued flange



Article information

Item no.: 47900
GTIN: 4026092034194
Price group: 10

Description

KESSEL intermediate section with glued flange 120 mm
System 100 made of ABS, for alternative waterproofing (seal composite) for natural stone coverings such as marble or granite, can be combined with all KESSEL upper sections System 100 (accessories), laterally adjustable to adapt to the tile grid, with construction period protection cover. Overall height:

Variant
System: 100

Dimensions
Net weight: 0,94 kg
Gross weight: 1,18 kg
Diameter: 312 mm
Length: 312 mm
Width: 312 mm
Height: 120 mm
Packaging dimension: length
Packaging dimension: width
Packaging dimension: height