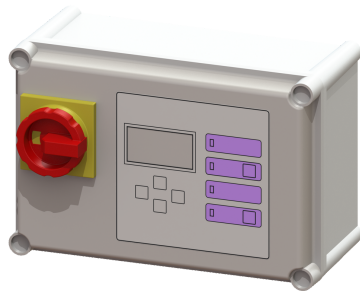


## Comfort control unit 400V, Aqualift Mono, 2.5-4.0 A



### Article information

Item no.: 28755  
 GTIN: 4026092055007  
 Price group: 20

### Advantages

- Self-diagnosis system (SDS)
- Potential-free contact for faults/warnings
- Reminder for when maintenance is due

### Description

Komfort control unit for lifting stations or pumping stations. Suitable for 400 V single stations. Optional connection option for float switches, conductivity probes and level probe on the terminal strip. User-friendly menu navigation in multi-line display. Menu navigation in six languages. Simple selection of the system to be connected with preset, system-specific operating parameters. Display of the current measured values. Simple adjustment of the function-related parameters, with integrated operating hour counter. With self-diagnosis system (SDS) for monitoring pump, sensors and battery back-up. Improper installation or operating faults trigger an optical and acoustic alarm signal. Forwarding of a collective fault and alarm signals via optional potential-free contact or integrated serial interface for GSM modem.

#### Variant

Series: ab 03/2010  
 Type of system: Single unit

#### General characteristics

Colour: grey  
 System type: Mono

#### Dimensions

Net weight: 2,47 kg  
 Gross weight: 3,19 kg  
 Packaging dimension: length  
 Packaging dimension: width  
 Packaging dimension: height

#### Control

Control unit: Comfort  
 Motor protection switch: yes  
 Protection class control unit: IP 54

|                              |           |
|------------------------------|-----------|
| Potential-free contact:      | yes       |
| GSM interface:               | yes       |
| USB interface:               | no        |
| Log book function:           | yes       |
| Multi-line display:          | yes       |
| Battery buffering:           | yes       |
| Self-diagnosis system (SDS): | yes       |
| Rated current:               | 2,5 - 4 A |