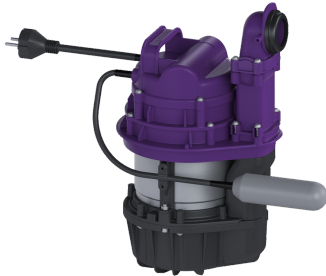


Technology kit Aqualift S Comp GTF1200Res Mon fl.switch



Article information

Item no.: 281200C-TK
 GTIN: 4026092108130
 Price group: 20

Description

For combination with a KESSEL shell kit for creating a Mono lifting station for wastewater without sewage with a GTF1200 wastewater pump.

The ready to plug in lifting station for wastewater without sewage is equipped with a submersible pump and a backflow preventer. The collection tank made of permanently resistant polymer (PE) has an open pump tank. One-handed closures enable easy removal of the integrated components. The system for installation in the floor slab is pre-assembled for final installation on site.

KESSEL technology kit consisting of:

- Pump with multi-vane vortex impeller for maximum operating safety
- Resistant to saline media, wastewater from water softening systems and wastewater containing condensate from heating systems
- Includes float switch for level measurement

Variant

| | |
|-----------------|--|
| Type of system: | Single unit |
| Resistant: | Resistant to saline media, wastewater from water softening systems and wastewater containing condensate from heating systems |
| Pump control: | Float switch |

Dimensions

| | |
|----------------------|----------|
| Net weight: | 9,75 kg |
| Gross weight: | 10,54 kg |
| Packaging dimension: | length |
| Packaging dimension: | width |
| Packaging dimension: | height |

Tank/drain body

| | |
|-----------------|------|
| Pumping volume: | 16 l |
|-----------------|------|

| | |
|--|--------------------------------|
| Pumping device | |
| Pump: | GTF 1200 resistant |
| Number of pumps: | 1 |
| Weight, pump: | 10 kg |
| Connection type: | Schuko (earthed contact) 2-pin |
| Rated current: | 6,2 A |
| Protection class: | I |
| Insulation class: | F |
| Protection class (pump): | IP 68 (3m) |
| Temperature monitoring: | integrated |
| Max. temperature (permanent) of conveyed material: | 40 °C |
| Hot water resistance for a short time (2 min): | 80 °C |
| Max. pumping capacity: | 15,5 m ³ /h |
| Max. pumping height: | 9 m |
| Speed: | 2650 U/min |
| Power P1: | 1,4 kW |
| Power P2: | 0,84 kW |
| Operating mode: | S3 - 10 % |
| Type of fuse required (electrical protection): | C 16 A |
| Type of pump connection cable: | H07RN-F 3G 1.5 mm ² |
| Impeller type: | Multi-vane impeller |
| Free passage: | 30 mm |
| Length of mains cable for pump: | 5 m |
| Control | |
| Level measurement instrument: | Float switch |
| Type of level measurement: | mechanical |
| Mains frequency: | 50 Hz |
| Operating voltage: | 230 V |
| Connection type: | Schuko (earthed contact) 2-pin |
| Type of fuse required (electrical protection): | C 16 A |