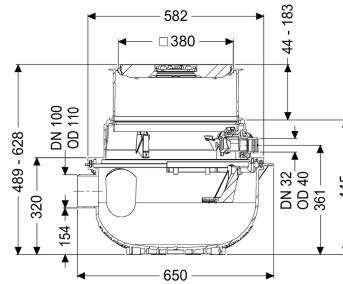


Shell Kit for Aqualift S Compact blac. GTF500 Mono



Article information

Item no.: 280500S-RBK

GTIN: 4026092106907

Price group: 20

Description

For combination with a KESSEL technology kit for creating a Mono lifting station for wastewater without sewage with a GTF500 wastewater pump.

The ready to plug in lifting station for wastewater without sewage is equipped with a submersible pump and a backflow preventer. The collection tank made of permanently resistant polymer (PE) has an open pump tank. One-handed closures enable easy removal of the integrated components. The system for installation in the floor slab is pre-assembled for final installation on site.

KESSEL shell kit consisting of:

- With vertically adjustable upper section for continuous height and level compensation and integrated floor drain
- PE collection tank, resistant to aggressive wastewater and 3 m groundwater
- Includes backflow preventer for the pressure pipe
- Includes connection socket for inlet and conduit pipe

Variant

Type of system:	Single unit
Pump control:	Float switch
Backflow preventer:	integrated

General characteristics

Colour:	black
Standard:	EN 12050-2

Type of wastewater: without sewage
Installation situation: floor slab installation
Delivery state: Installation-ready (connection parts must be connected on site)

Dimensions

Net weight: 21 kg
Gross weight: 21 kg
Groundwater resistant from lower edge of base section: 3000 mm
Installation depth: 490 - 620 mm
Type of height adjustability: vertically adjustable upper section
Length: 617 mm
Width: 585 mm
Packaging dimension: length
Packaging dimension: width
Packaging dimension: height

Tank/drain body

Pressure pipe connection (DN): 32
Pressure pipe connection (OD): 40 mm
Inlet nominal size (DN): 100 mm
Pumping volume: 16 l
Tank volume: 65 l

Coverage features

Type of cover: Cover plate with slotted cover
Cover material: Polymer
Colour of cover: black
Width of cover: 366 mm
Length of cover: 366 mm
Drainage function: yes
Locking: Lock & Lift
Load class: K 3 (EN 1253-1)
Max. flooring height: 16 mm

Pumping device

Pump: GTF 500
Number of pumps: 1
Operating voltage: 230 V
Max. pumping height: 8 m

Control

Operating voltage: 230 V