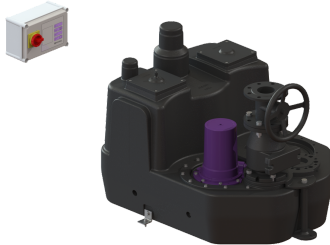


Aqualift F XL, 200 L lift. stat. Mono, SPF 5500-S3, Cast-iron shut-off val



Article information

Item no.: 11074
 GTIN: 4026092057414
 Price group: 50

Advantages

- Different performance classes available
- Pressure sensor for reliable pneumatic level measurement
- Maximum operating reliability due to intelligent control unit (Duo)

Description

The lifting station for faecal and faecal-free wastewater is equipped with one or two submersible pumps and a backflow preventer. The collection tank made of permanently resistant polymer (PE) offers universal connection options and has a screwed access cover.

Variant

| | |
|---------------------------|----------------------------------|
| Type of system: | Single unit |
| Shut-off valve: | Shut-off valve made of cast iron |
| Backflow preventer: | integrated |
| Pressure pipe connection: | vertical |

General characteristics

| | |
|-------------------------|----------------------------|
| Colour: | black |
| Standard: | EN 12050-1 |
| Type of wastewater: | with sewage |
| Installation situation: | free-standing installation |
| System type: | Mono |

Dimensions

| | |
|----------------------|----------|
| Net weight: | 131,3 kg |
| Gross weight: | 151,3 kg |
| Packaging dimension: | length |
| Packaging dimension: | width |
| Packaging dimension: | height |

Tank/drain body

| | |
|--------------|-------|
| Tank volume: | 200 l |
|--------------|-------|

| | |
|---------------------------------|---------------------|
| Pumping device | |
| Pump: | SPF 5500 |
| Number of pumps: | 1 |
| Operating mode: | S3 - 30 % |
| Impeller type: | Multi-vane impeller |
| Free passage: | 40 mm |
| Length of mains cable for pump: | 5 m |
| Control | |
| Control unit: | Comfort |
| Level measurement instrument: | Immersion pipe |
| Type of level measurement: | pneumatic |
| Mains frequency: | 50 Hz |
| Operating voltage: | 400 V |