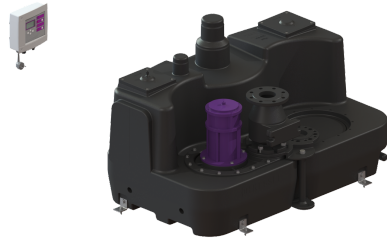


## Lifting stati. Aqualift F XL 300l Mono, SPF 1400-S3, Backflow preventer



### Article information

Item no.: 11013  
 GTIN: 4026092056806  
 Price group: 50

### Advantages

- Different performance classes available
- Pressure sensor for reliable pneumatic level measurement
- Maximum operating reliability due to intelligent control unit (Duo)

### Description

The lifting station for faecal and faecal-free wastewater is equipped with one or two submersible pumps and a backflow preventer. The collection tank made of permanently resistant polymer (PE) offers universal connection options and has a screwed access cover.

#### Variant

Type of system:	Single unit
Shut-off valve:	without shut-off valve
Backflow preventer:	integrated
Pressure pipe connection:	vertical

#### General characteristics

Colour:	black
Standard:	EN 12050-1
Type of wastewater:	with sewage
Installation situation:	free-standing installation
System type:	Mono

#### Dimensions

Net weight:	116,85 kg
Gross weight:	136,85 kg
Packaging dimension:	length
Packaging dimension:	width
Packaging dimension:	height

#### Tank/drain body

Tank volume:	300 l
--------------	-------

Pumping device	
Pump:	SPF 1400-S3
Number of pumps:	1
Operating mode:	S3 - 50 %
Impeller type:	Multi-vane impeller
Free passage:	40 mm
Length of mains cable for pump:	5 m
Control	
Control unit:	Comfort
Level measurement instrument:	Immersion pipe
Type of level measurement:	pneumatic
Mains frequency:	50 Hz
Operating voltage:	230 V